

NOTES:

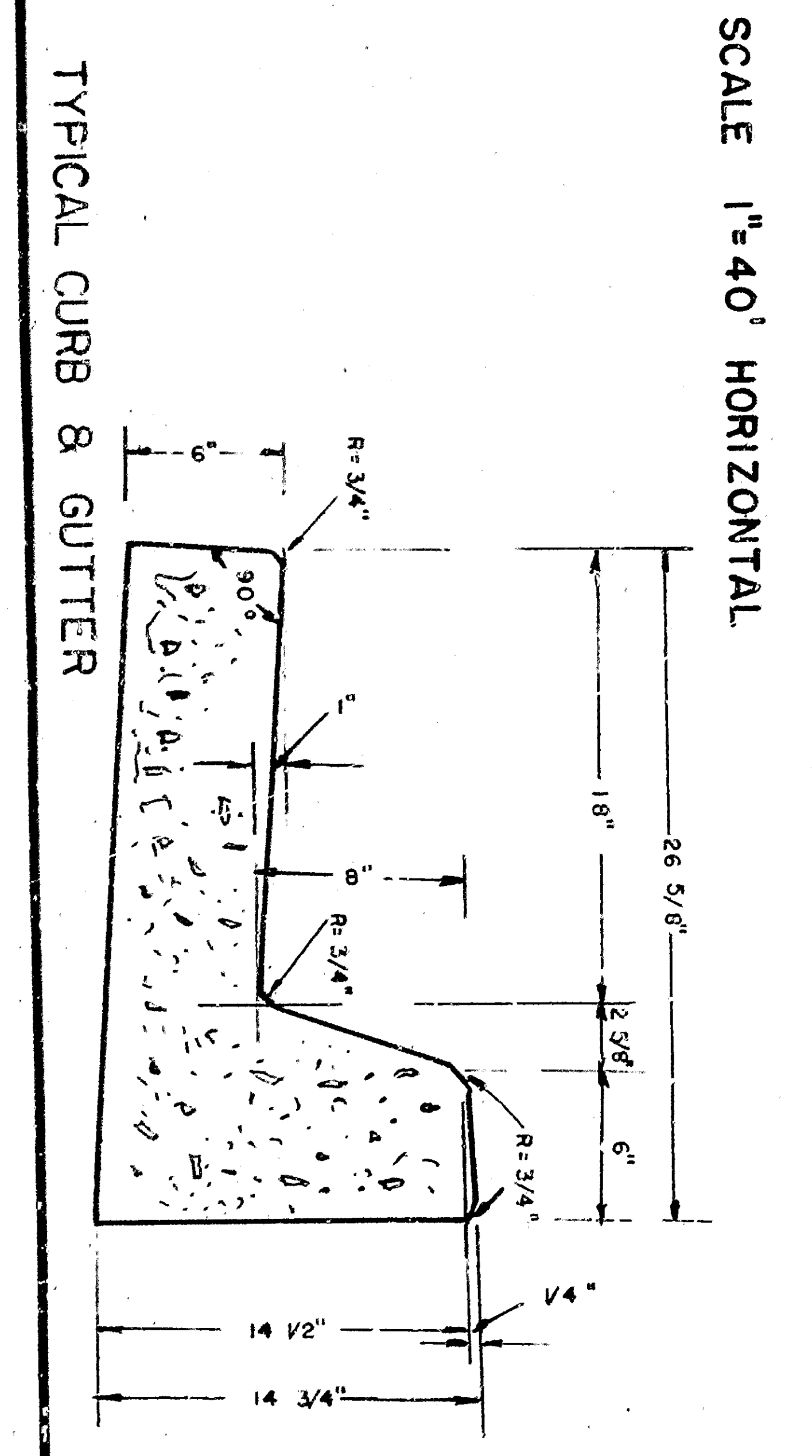
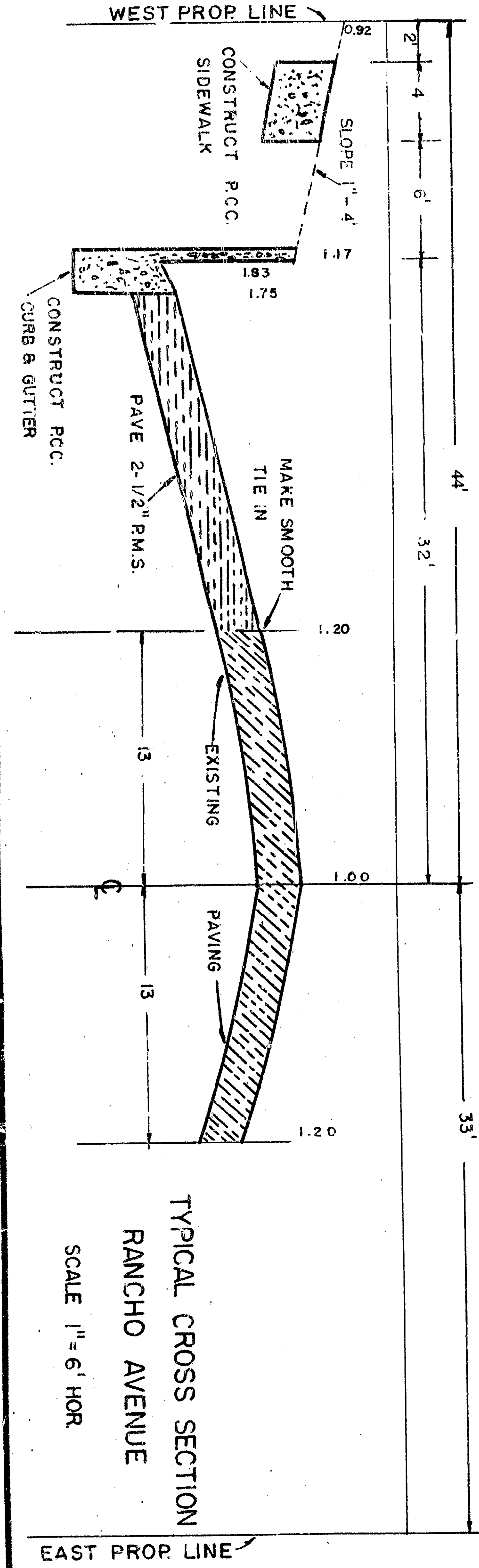
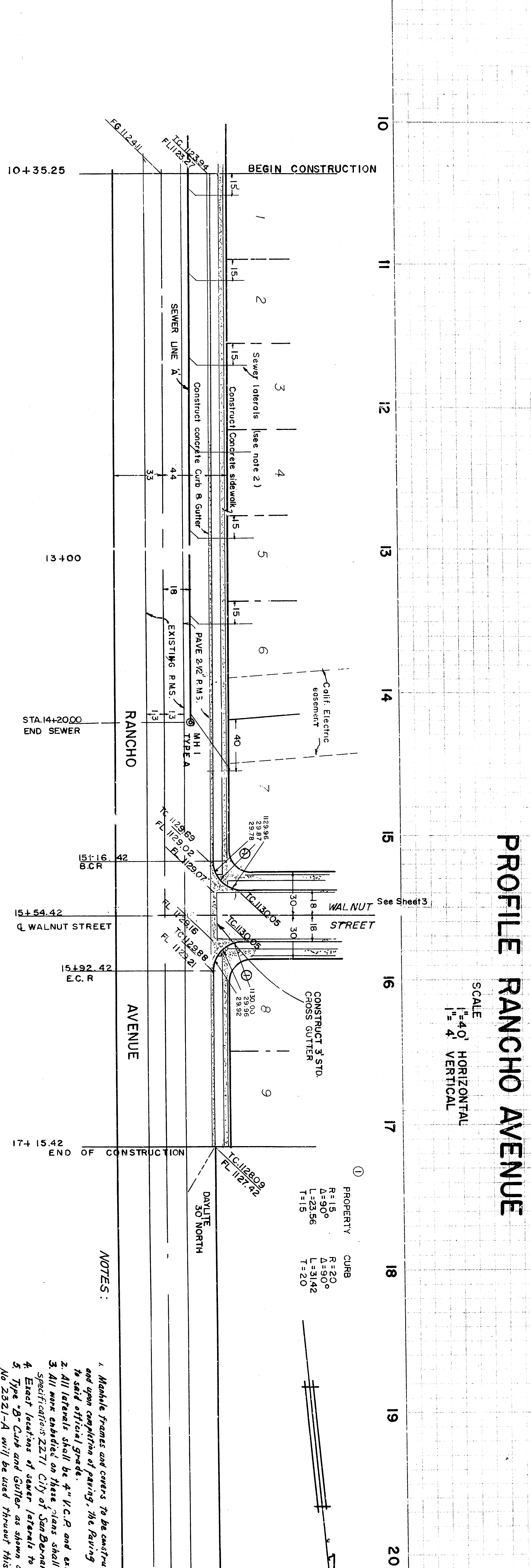
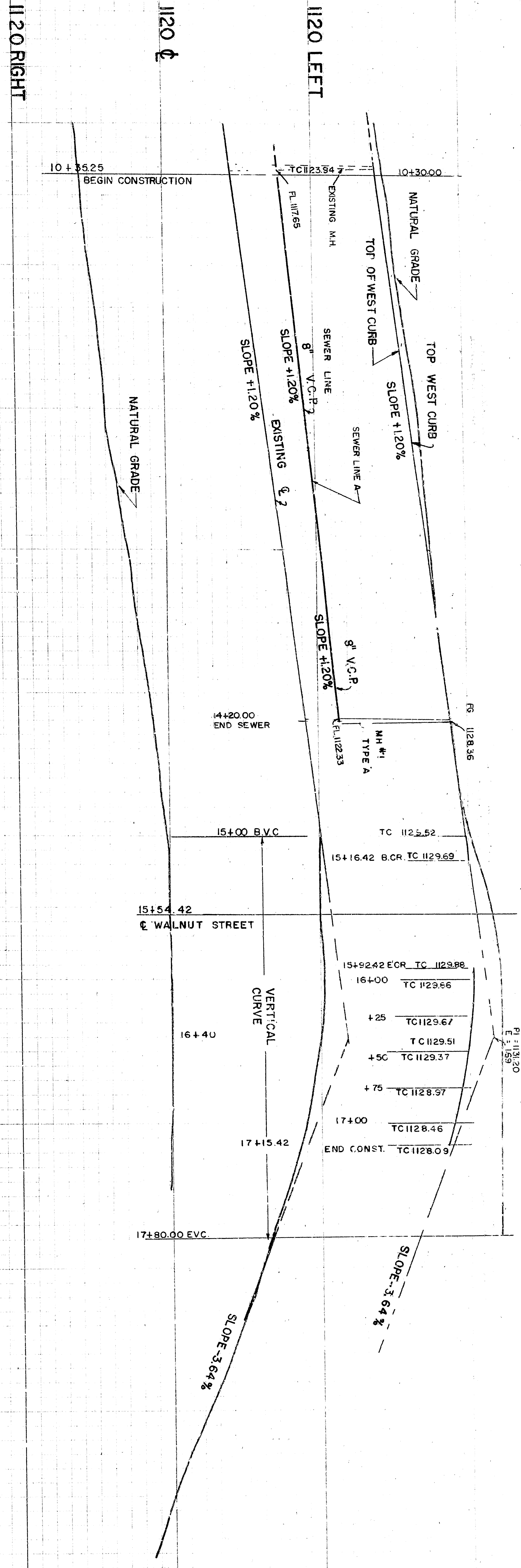
1. Manhole frames and covers to be constructed by sewer contractor 6" below official grade shown and upon completion of paving. The Paving Contractor shall adjust manhole frames and covers to said official grade.
2. All materials shall be 3/4" P.C. and extended 2' behind property line.
3. All materials shall be 3/4" P.C. and extended 2' behind property line.
4. Exact locations of sewer laterals to be determined in field.
5. Type "B" Curb and Gutter as shown on City of San Bernardino Engineering drawing No. 2351-A will be used through this tract.
6. B.M. Spike on P.P. 464-678 E. West side of Rancho Avenue at Mill Street, Elev. 111.56 S.B. M.S.L.

IMPROVEMENT PLANS AND PROFILES  
TRACT NO 5457

Rayton & McNeil  
San Diego 9  
Ronald E. Wolford  
3879

2493  
4





- NOTES:**
1. Manhole frames and covers to be constructed by sewer contractor 6" below official grade shown and upon completion of paving. The Paving Contractor shall adjust manhole frames and covers to said official grade.
  2. All materials shall be 3" P.C.C. and extended 2' behind property line.
  3. All materials shall be 3" P.C.C. and extended 2' behind property line.
  4. Exact locations of sewer laterals to be determined in field.
  5. Type "B" Curb and Gutter as shown on City of San Bernardino Engineering drawing No. 2351-A will be used through this tract.
  6. B.M. Spike on P.P. 464-678 E. West side of Rancho Avenue at Mill Street, Elev. 111.58 S.B. M.S.L.
- B.M. 6 Pipe Rancho & Mill (East) 111.077 M.S.L.  
R.F.E. *[Signature]*  
Reg. Civil Engineer # 6692

**IMPROVEMENT PLANS AND PROFILES**  
**TRACT NO 5457**

Newton & McNeil  
January 9, 57  
*[Signature]*  
3879

2493  
4